

5 | INDIVIDUALISED INSERTS FOR EURO CONTAINERS

Boxplus transverse divider is the perfect solution if you want to subdivide your Euro containers crosswise: a narrow insert on each long side holds the dividers securely in place.

Practical compartments

- Very stable due to narrow inserts
- A perfect overview
- Custom-made
- Matched to EURO dimensions



OUR TIP

CONFIGURE INSERTS

We can individually configure special compartments as well as longitudinal and cross dividers for Euro containers. Simply let us know the basic size of the container, the height of the insert and the desired divider.

5a | TRANSVERSE DIVIDERS

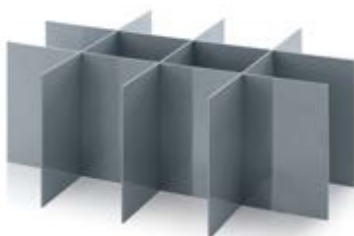
silver grey similar RAL 7001

| Article No. | Design | Height | Cross divider |
|-------------|-----------------------------------|-----------|-----------------|
| QTGEF43 | Set for base dimension 40 x 30 cm | 5 - 30 cm | 1 - 20 starting |
| QTGEF64 | Set for base dimension 60 x 40 cm | 5 - 40 cm | 1 - 20 starting |
| QTGEF86 | Set for base dimension 80 x 60 cm | 5 - 60 cm | 1 - 20 starting |

5b | LONGITUDINAL DIVIDERS

silver grey similar RAL 7001

| Article No. | Design | Height | Length divider |
|-------------|-----------------------------------|-----------|-----------------|
| LTGEF43 | Set for base dimension 40 x 30 cm | 5 - 30 cm | 1 - 20 starting |
| LTGEF64 | Set for base dimension 60 x 40 cm | 5 - 40 cm | 1 - 20 starting |
| LTGEF86 | Set for base dimension 80 x 60 cm | 5 - 60 cm | 1 - 20 starting |



5c | SPECIAL COMPARTMENTS

silver grey similar RAL 7001

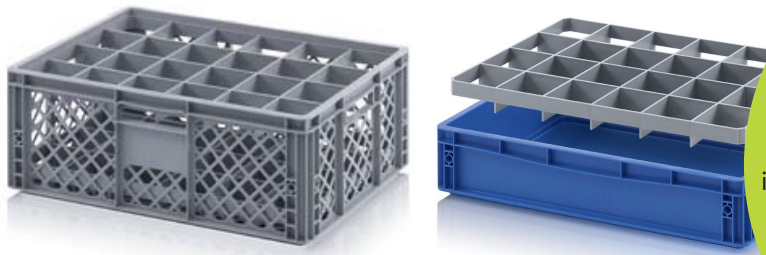
| Article No. | Design | Height | Length divider | Cross divider |
|-------------|-----------------------------------|-----------|----------------|---------------|
| SGF43 | Set for base dimension 40 x 30 cm | 5 - 30 cm | 1-10 | 2-10 |
| SGF64 | Set for base dimension 60 x 40 cm | 5 - 40 cm | 1-10 | 2-10 |
| SGF86 | Set for base dimension 80 x 60 cm | 5 - 60 cm | 1-10 | 2-10 |

3 | INSERTS FOR GLASSES

Boxplus box insert for Euro containers brings order to the storage and transportation of glasses or components. The “bottom” insert is laid directly into the container, while the “top” insert is placed onto the container using two bars on the front of it and then pressed firmly into the container’s handle opening.

Arrange & organise glasses and components

- Holds the contents securely in place
- Sturdy internal compartments
- Good washing and drying results
- Various designs



silver grey similar RAL 7001

PLEASE NOTE

The box insert ‘top’ is only suitable for Euro containers with open handles! Special ridges on the short sides of the insert can be hooked into the open handle of the container, ensuring a secure hold. The ‘bottom’ version is placed directly in the Euro container and can therefore be used without handles.

| Article No. | Design Hole diameter (cm) | Hole diameter (cm) | Units on pallet |
|-------------|--------------------------------|--------------------|-----------------|
| GEF12o | 12 holes 13.7 x 11.7 cm top | 13.7 x 11.7 | 240 |
| GEF12u | 12 holes 13.7 x 11.7 cm bottom | 13.7 x 11.7 | 240 |
| GEF15o | 15 holes 10.9 x 11.7 cm top | 10.9 x 11.7 | 240 |
| GEF15u | 15 holes 10.9 x 11.7 cm bottom | 10.9 x 11.7 | 240 |
| GEF24o | 24 holes 9.0 x 8.6 cm top | 9.0 x 8.6 | 240 |
| GEF24u | 24 holes 9.0 x 8.6 cm bottom | 9.0 x 8.6 | 240 |
| GEF40o | 40 holes 6.7 x 6.7 cm top | 6.7 x 6.7 | 240 |
| GEF40u | 40 holes 6.7 x 6.7 cm bottom | 6.7 x 6.7 | 240 |



4 | SPACER CLASSIC EURO CONTAINERS

silver grey similar RAL 7001

| Outer dimensions L x W x H | Article No. | Units on pallet |
|----------------------------|-------------|-----------------|
| 36.5 x 26.5 cm | ZP43 | 500 |
| 57.0 x 36.5 cm | ZP64 | 500 |
| 76.0 x 56.0 cm | ZP86 | 500 |

